

LIFT STATION STANDARD DETAILS INDEX

DATE MODIFIED

LS-1	LIFT STATION WET WELL DESIGN NOTES	2/2020
LS-2.1	LIFT STATION CONSTRUCTION NOTES (1 OF 2)	2/2020
LS-2.2	LIFT STATION CONSTRUCTION NOTES (2 OF 2)	2/2020
LS-3	RUBBER BOOT AND PRECAST JOINT CONNECTION	2/2020
LS-4	TYPICAL LIFT STATION SITE PLAN	2/2020
LS-5	TYPICAL LIFT STATION SITE PLAN	2/2020
LS-6	LIFT STATION WATER SERVICE (WHERE RECLAIM WATER NOT AVAILABLE)	2/2020
LS-7	LIFT STATION PLAN	2/2020
LS-8	LIFT STATION WET WELL	2/2020
LS-9	LIFT STATION EMERGENCY PUMP CONNECTION	2/2020
LS-10	LIFT STATION ELECTRICAL EQUIPMENT RACK	2/2020
LS-11	LIFT STATION ELECTRICAL EQUIPMENT RACK NOTES	2/2020
LS-12	LIFT STATION ELECTRICAL SERVICE SCHEMATIC	2/2020
LS-13	SANITARY SEWER AIR RELEASE VALVE ASSEMBLY W/ ODOR CONTROL SYSTEM (VERTICAL PIPE LAYOUT)	2/2020
LS-14	SANITARY SEWER AIR RELEASE VALVE ASSEMBLY W/ ODOR CONTROL SYSTEM (OFFSET PIPE LAYOUT)	2/2020
LS-15	SANITARY SEWER - FORCE MAIN AIR RELEASE VALVE (UNDERGROUND - TRAFFIC STYLE)	2/2020
LS-16	LIFT STATION PUMP OUT / BYPASS CONNECTION	2/2020
LS-17	SANITARY SEWER FORCE MAIN - VALVE & VALVE BOX (4" -16")	2/2020



CITY OF HOLLY HILL, FLORIDA
STANDARD CONSTRUCTION DETAILS

LIFT STATION DETAILS

DATE
02/2020

DETAIL NUMBER
INDEX

LIFT STATION WET WELL DESIGN NOTES

1. SEE CITY STANDARD DETAIL FOR EMERGENCY PUMP CONNECTION REQUIREMENTS.
2. SEE CITY STANDARD DETAIL FOR 1" HOSE BIBB AND REQUIREMENTS.
3. SEE CITY STANDARD ELECTRICAL DETAIL FOR ELECTRICAL REQUIREMENTS.
4. MINIMUM WET WELL DIAMETER IS 6.0 FT. MINIMUM REQUIRED DEPTH OF WET WELL BELOW LOWEST INVERT IS 3'-6" MINIMUM CONCRETE WALL THICKNESS IS 8".
5. STATION TOP TO BE MIN. OF 1 FT. ABOVE FINISHED GRADE AND THE SURROUNDING FINISHED GRADE ELEVATION AND SHALL BE NO LOWER THAN THE 100-YEAR BASE FLOOD ELEVATION.
6. WETWELL DEPTH TO BE A MAXIMUM OF 20.0'.
7. ALL FENCING INSTALLED IN THE VICINITY OF LIFT STATIONS SHALL BE 6' HIGH CHAIN LINK PLASTIC COATED, BLACK IN COLOR, WOODEN SHADOW BOX, OR MASONRY WALL AS APPROVED BY THE DEPT. OF COMMUNITY DEVELOPMENT IN COMPLIANCE WITH THE ARCHITECTURAL AND LANDSCAPE REQUIREMENTS OF THE LDC. ANY SPECIAL FENCING APPROVED AND INSTALLED SHALL BE MAINTAINED BY THE PRIVATE ENTITY RESPONSIBLE. WALL / FENCING SHALL BE INSTALLED WITH A MINIMUM OF 24" CLEARANCE FROM ALL ELECTRICAL / MECHANICAL EQUIPMENT.



CITY OF HOLLY HILL, FLORIDA
STANDARD CONSTRUCTION DETAILS
LIFT STATION WET WELL
DESIGN NOTES

DATE
02/2020

DETAIL NUMBER
LS-1

LIFT STATION WET WELL CONSTRUCTION NOTES (1 OF 2)

1. SEE CITY STANDARD DETAIL FOR EMERGENCY PUMP CONNECTION REQUIREMENTS.
2. SEE CITY STANDARD DETAIL FOR 1" HOSE BIBB AND REQUIREMENTS.
3. SEE CITY STANDARD ELECTRICAL DETAIL FOR ELECTRICAL REQUIREMENTS.
4. ALL PIPING AND FITTINGS IN WET WELLS TO BE ASSEMBLED USING 316 STAINLESS STEEL BOLTS AND NUTS ONLY.
5. ALL PUMP SUCTION LINE FITTINGS TO BE FLANGED JOINT, EXCEPT BASE TEES SHALL BE GLUED PVC WITH GLUED PVC BOTTOM CAPS.
6. SUCTION LINES IN WET WELL SHALL BE SUPPORTED AT THE BASE WITH GLUED PVC SUCTION TEES.
7. ALL DISCHARGE FITTINGS TO BE PVC RESTRAINED JOINT.
8. ALL SEWER LINES ENTERING AND EXITING MANHOLES SHALL BE SEALED UTILIZING RUBBER BOOTS OR OTHER CITY APPROVED INFILTRATION LIMITING METHODS.
9. WET WELL SECTIONS SHALL BE JOINED USING "RAMNECK" JOINT MATERIAL AND SHALL BE FREE FROM SEEPAGE PRIOR TO ACCEPTANCE. PROVIDE "EZ-WRAP" BUTYL ADHESIVE TAPE PER MANUFACTURER'S RECOMMENDATIONS AT EACH WETWELL SECTION EXTERIOR JOINT CIRCUMFERENCE.
10. NO SPLICES OR JUNCTION BOXES ARE ALLOWED FOR BALL FLOAT CORD INSTALLATION.
11. ALL LIFT STATIONS AND THE LAST MANHOLE COMING INTO A WETWELL SHALL BE FIBERGLASS LINED, AGRU SURE GRIP, OR H.D.P.E. LINED, OR OTHER MATERIAL AS APPROVED BY THE CITY (ASTM D 3753).
12. WET WELL CONSTRUCTION SHALL BE REINFORCED CONCRETE IN ACCORDANCE WITH A.S.T.M. C-76, 4000 PSI AT 28 DAYS. ALTERNATE CONSTRUCTION SHALL BE PRECAST MONOLITHIC WITH BASE SLAB IN ACCORDANCE WITH A.S.T.M. C-478.
13. ELECTRICAL PERMIT TO BE OBTAINED FROM CITY (OR APPROPRIATE JURISDICTION) PRIOR TO BEGINNING WORK ON ANY ELECTRICAL WIRING, EQUIPMENT, ETC. ALL ELECTRICAL WIRING TO COMPLY WITH NATIONAL ELECTRICAL CODE.
14. THREE COPIES OF THE LIFT STATION OPERATING MANUAL TO BE PROVIDED TO THE PUBLIC WORKS DEPT. PRIOR TO FINAL ACCEPTANCE OF THE LIFT STATION.
15. EMERGENCY ELECTRICAL RECEPTACLE REQUIRED TO BE INSTALLED ON ELECTRICAL EQUIPMENT RACK, (SEE S-25).
16. EMERGENCY "HIGH LEVEL" WET WELL SOLID ALARM LIGHT REQUIRED NO HORN OR AUDIBLE ALARM REQUIRED.
17. LINKABLE FUSED ELECTRICAL DISCONNECT REQUIRED.
18. ALL PUMP STATION WIRING SHALL BE STANDARD COPPER. THREE PHASE POWER AND MOTORS REQUIRED.
19. RADIO TELEMETRY (RTU) TO BE PROVIDED BY DEVELOPER. CONTACT THE CITY FOR SPECIFICATIONS OR CONTACT DIRECTLY THE CURRENT SOLE SOURCE SUPPLIER DATA FLOW.
20. DEVELOPER / CONTRACTOR TO PAY ALL INITIAL ELECTRICAL CONNECTION CHARGES, ETC. ON THE DAY OF FINAL ACCEPTANCE BY THE CITY. ALL FUTURE MONTHLY ELECTRICAL BILLS TO BE TAKEN OVER BY THE CITY'S PUBLIC WORKS DEPARTMENT. PLEASE CONTACT THE PUBLIC WORKS DEPARTMENT TO TRANSFER POWER BILL OVER TO THE CITY.
21. 4" PVC CONDUIT FOR FLOAT WIRES SHALL BE INSTALLED FOR ALL OFFSET LIFT STATIONS.



CITY OF HOLLY HILL, FLORIDA
STANDARD CONSTRUCTION DETAILS
**LIFT STATION WET WELL
CONSTRUCTION NOTES**

DATE
02/2020

DETAIL NUMBER
LS-2.1

LIFT STATION WET WELL CONSTRUCTION NOTES (2 OF 2)

23. ALL FENCING INSTALLED IN THE VICINITY OF LIFT STATIONS SHALL BE 6' HIGH CHAIN LINK PLASTIC COATED, BLACK IN COLOR, WOODEN SHADOW BOX, OR MASONRY WALL AS APPROVED BY THE DEPT. OF COMMUNITY DEVELOPMENT IN COMPLIANCE WITH THE ARCHITECTURAL AND LANDSCAPE REQUIREMENTS OF THE LDC. ANY SPECIAL FENCING APPROVED AND INSTALLED SHALL BE MAINTAINED BY THE PRIVATE ENTITY RESPONSIBLE WALL/ FENCING SHALL BE INSTALLED WITH A MINIMUM OF 24" CLEARANCE FROM ALL ELECTRICAL / MECHANICAL EQUIPMENT.
24. LIFT STATION START-UP INSPECTIONS SHALL BE SCHEDULED AND COORDINATED THROUGH THE CITY'S SITE INSPECTOR (2 BUSINESS DAYS IN ADVANCE). UPON DETERMINING THAT ALL WORK IS COMPLETE AND READY THE CITY INSPECTOR SHALL THEN NOTIFY THE CITY, CONTRACTOR, ENGINEER OF RECORD, POWER COMPANY, DATA FLOW, AND THE PUMP SUPPLIER OF THE OFFICIAL START-UP INSPECTION DATE AND TIME. UPON COMPLETION THE ENGINEER OF RECORD SHALL PROVIDE TO THE CITY A SUMMARY OF THE RESULTS OF THAT TEST AND A LIST OF ALL PUNCH LIST ITEMS OUTSTANDING.
25. 1" RTU PORT TO LIFT STATION AT THE "DOG HOUSE".
26. PUMP STATION FINAL INSPECTION AND ACCEPTANCE PROCEDURES:
 - BEFORE FINAL APPROVAL OR ACCEPTANCE OF ANY PUMP STATION BY THE CITY, THERE SHALL BE FIELD INSPECTIONS MADE BY THE CITY'S REPRESENTATIVE AND INSPECTOR. THE FIELD INSPECTIONS SHALL SHOW THAT THE PUMP STATION IS FULLY OPERATIONAL AND ALL NECESSARY APPURTENANCES HAVE BEEN INSTALLED AND CONSTRUCTED IN ACCORDANCE WITH THE PLANS AND THE STANDARD CONSTRUCTION DETAILS AS APPROVED BY THE PUBLIC WORKS DEPARTMENT PRIOR TO CONSTRUCTION.
 - UPON COMPLETION AND BEFORE ACCEPTANCE OF THE PUMP STATION INSTALLATION, THE CONTRACTOR SHALL TEST ALL THE PUMPING EQUIPMENT TO DEMONSTRATE SATISFACTORY PERFORMANCE. IF DEFICIENCIES OCCUR, THE CONTRACTOR SHALL CORRECT THEM ACCORDINGLY AND EQUIPMENT SHALL BE RETESTED.
 - REPRESENTATIVES FROM THE PUMPING EQUIPMENT MANUFACTURER, DATA FLOW TELEMETRY, AND THE ELECTRICAL CONTRACTOR SHALL BE PRESENT AT THE PUMP STATION START-UP TESTING AND FOR THE FINAL SITE INSPECTION.
 - ALL PUMP STATION EQUIPMENT SHALL BE TESTED AT THE START-UP. THE MANUFACTURER/CONTRACTOR SHALL PROVIDE A FORMAL TEST PROCEDURE AND FORMS FOR RECORDING DATA. THE TESTS SHALL BE PERFORMED BY THE CONTRACTOR IN THE PRESENCE OF A CITY REPRESENTATIVE AND CITY INSPECTOR. THE RECORDED FIELD DATA SHALL BE SUBMITTED TO THE PUBLIC WORKS DEPARTMENT ALONG WITH THE PUMP STATION AS-BUILT AND PUMP STATION MAINTENANCE AND OPERATING MANUALS.
 - ALL GROUND SURROUNDING THE PUMP STATION MUST BE GRADED IN # 57 STONE FINAL ACCEPTANCE OF THE PUMP STATION WILL NOT BE GIVEN UNTIL EFFECTIVE EROSION AND POSITIVE DRAINAGE CONTROL HAVE BEEN PROVIDED.
 - PUMP STATIONS SHALL ONLY BE CONSIDERED AS ACCEPTABLE FOR OPERATION BY THE CITY UPON WRITTEN CONFIRMATION BY THE PUBLIC WORKS DEPARTMENT.
 - IN THE EVENT THAT THE STATION OR ANY OF IT'S ASSOCIATED COMPONENTS ARE DETERMINED TO BE DEFICIENT AT THE START UP, THEN THE CITY RESERVES THE RIGHT TO REQUIRE A COMPLETE NEW START UP WITH ALL PARTIES PRESENT AS NOTED.
 - UPON COMPLETION AND ACCEPTANCE, THE CITY SHALL NOTIFY THE ENGINEER OF RECORD.

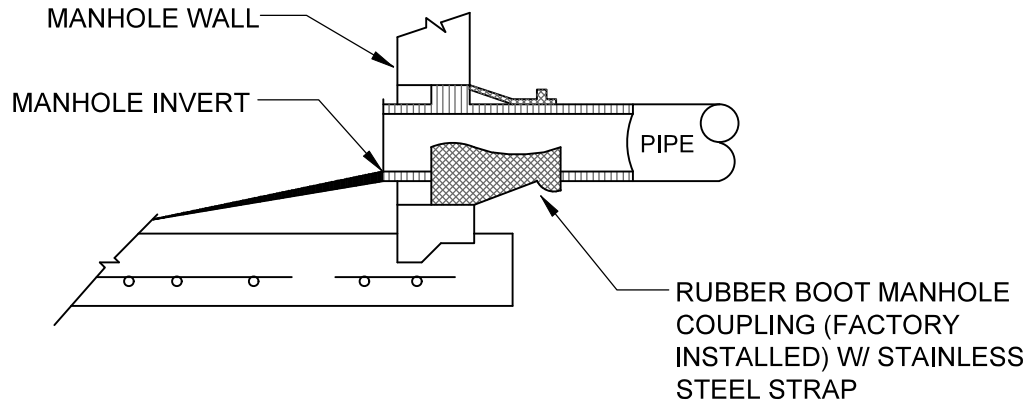


CITY OF HOLLY HILL, FLORIDA
STANDARD CONSTRUCTION DETAILS

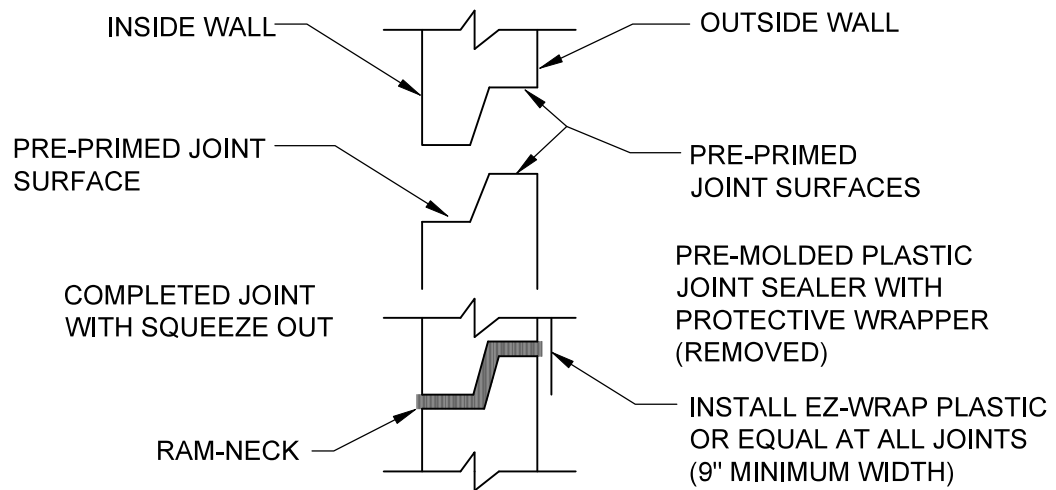
LIFT STATION WET WELL CONSTRUCTION NOTES

DATE
02/2020

DETAIL NUMBER
LS-2.2



MANHOLE PIPE CONNECTION
(FOR NEW CONNECTIONS IN EXISTING MANHOLES)



PRECAST JOINT CONNECTION

NOTE:

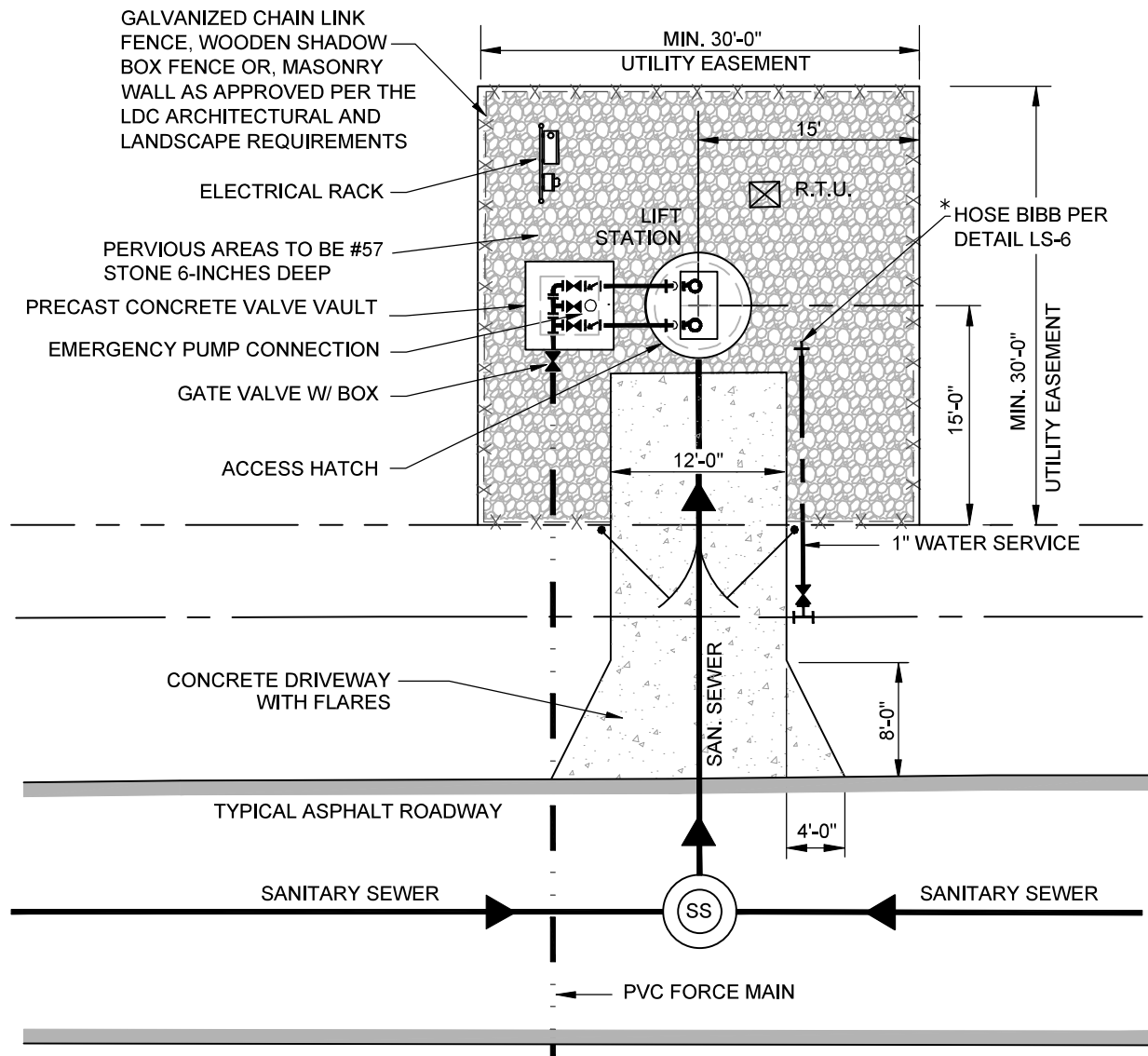
1. ALL NEW CONNECTIONS TO EXISTING SANITARY SEWER MANHOLES SHALL UTILIZE A CORING METHOD AND THE IN-FIELD INSTALLATION OF A RUBBER BOOT INTO THE MANHOLE.



CITY OF HOLLY HILL, FLORIDA
 STANDARD CONSTRUCTION DETAILS
**RUBBER BOOT AND PRECAST JOINT
 CONNECTION**

DATE
02/2020

DETAIL NUMBER
LS-3



NOTES:

1. DRIVEWAY TO BE 6" THICK 3000 PSI CONCRETE AT 28 DAYS WITH 6x6 10/10 W.W. MESH. BASE TO BE COMPACTED AND TESTED TO 98% DENSITY WITH MINIMUM L.B.R. 40 BASED ON AASHTO T-180 MODIFIED PROCTOR TEST.
2. IF RECLAIMED WATER IS UNAVAILABLE FOR LIFT STATION WATER SERVICE, CONTRACTOR SHALL USE POTABLE WATER.
3. 12.0' HAMMERHEAD DRIVEWAY OUTSIDE FENCE MAY BE REQUIRED DEPENDS ON SITE CONDITION.
4. FENCE MAY BE RELOCATED INTERNALLY WITHIN SITE TO CREATE A 25' X 25' SITE IF LANDSCAPING MATERIALS ARE INSTALLED AROUND THE PERIMETER. ANY FENCE MATERIAL DEVIATIONS WILL REQUIRE MAINTENANCE BY OWNER/DEVELOPER.
5. FINISH GRADE OF LIFT STATION SITE SHALL BE EQUAL TO OR GREATER THAN THE ELEVATION OF THE CENTERLINE OF ADJACENT ROADWAY & THERE MUST BE POSITIVE DRAINAGE AT & SURROUNDING THE SITE.

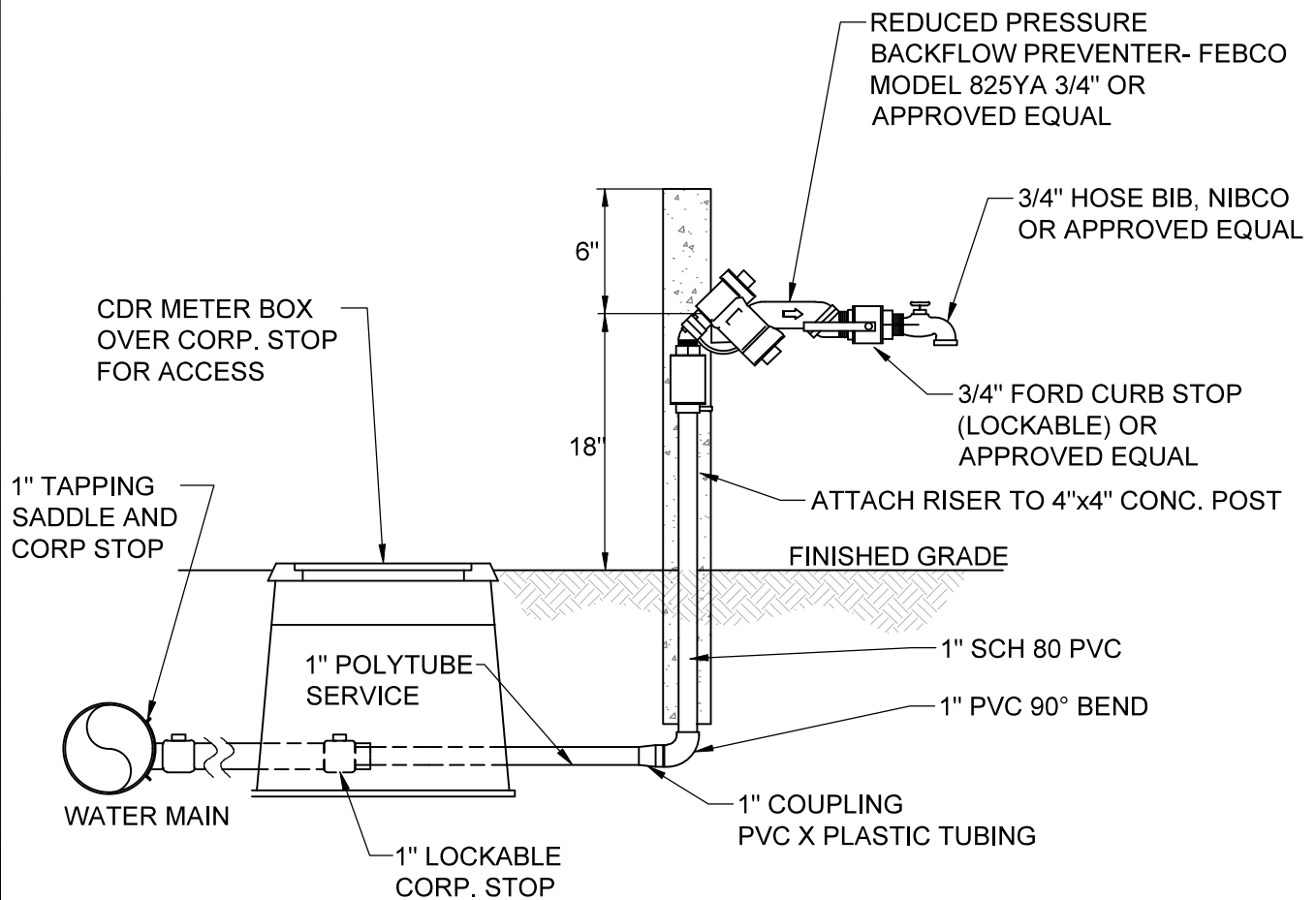


CITY OF HOLLY HILL, FLORIDA STANDARD CONSTRUCTION DETAILS TYPICAL LIFT STATION SITE PLAN

DATE
02/2020

DETAIL NUMBER
LS-4

	CITY OF HOLLY HILL, FLORIDA STANDARD CONSTRUCTION DETAILS	DATE 02/2020
	TYPICAL LIFT STATION SITE PLAN	DETAIL NUMBER LS-5



NOTES:

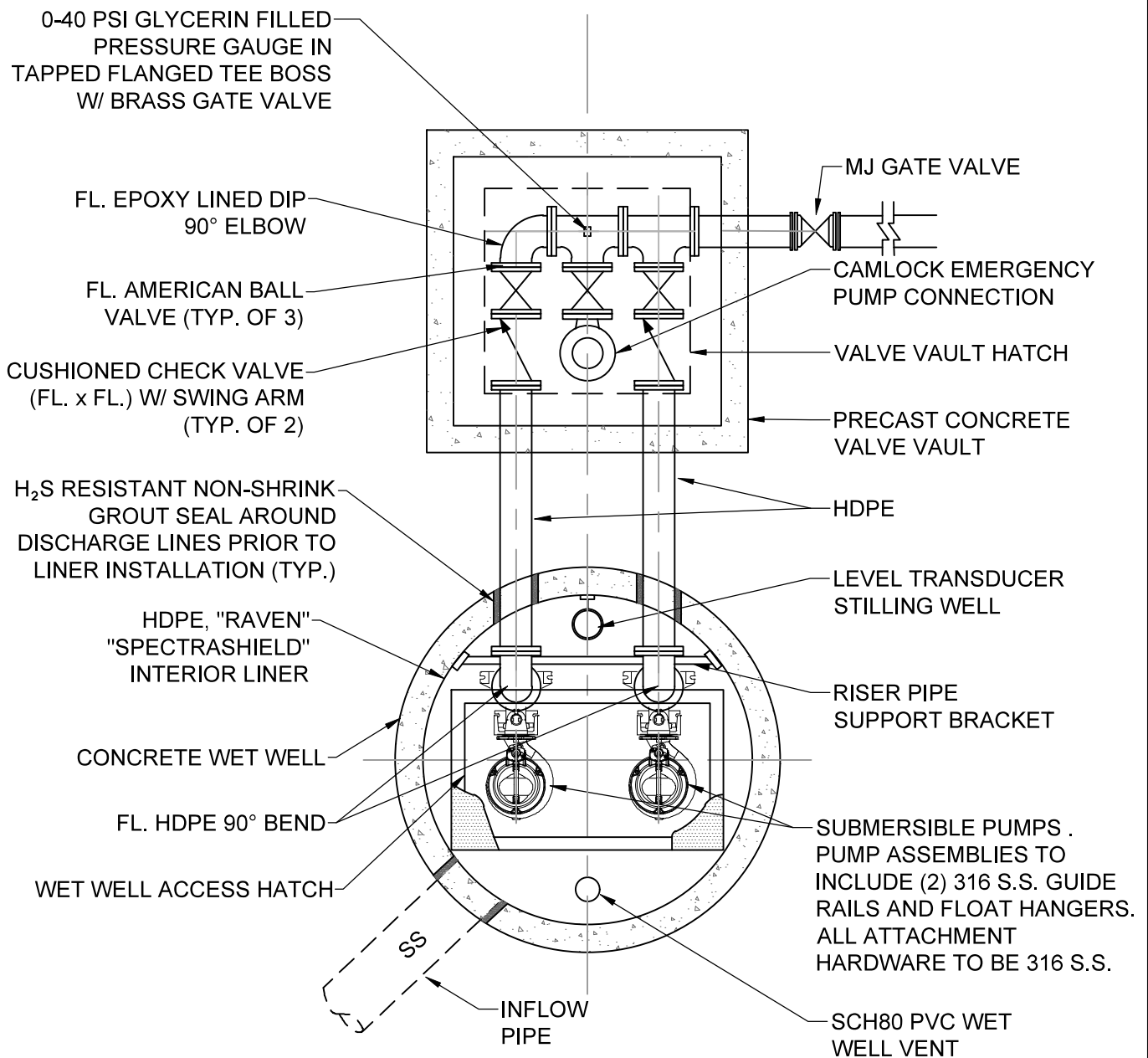
1. ALL BRASS FITTINGS TO BE LEAD FREE NSF 372.
2. REDUCED PRESSURE BACKFLOW PREVENTER SHALL BE LOCKABLE.



CITY OF HOLLY HILL, FLORIDA
STANDARD CONSTRUCTION DETAILS
LIFT STATION WATER SERVICE
(WHERE RECLAIM WATER NOT AVAILABLE)

DATE
02/2020

DETAIL NUMBER
LS-6



NOTES:

1. VALVE VAULT TO HAVE (2) COATS - 15 MILS TOTAL OF COAL TAR EPOXY INTERIOR COATING. INSTALL SCH80 PVC VAULT DRAIN AS SHOWN. INSTALL DRAIN TRAP INSIDE WET WELL.
2. PROVIDE HASP TYPE LOCKING MECHANISM ON ALL ACCESS HATCHES.
3. PUMPS TO BE FURNISHED WITH HIGH PRESSURE DISCHARGE COUPLING, STAINLESS STEEL GUIDE RAILS SYSTEM, SEAL FAILURE AND THERMAL OVERLOAD INDICATORS.
4. ALL HARDWARE INSIDE WET WELL TO BE 316 STAINLESS STEEL (S.S.).

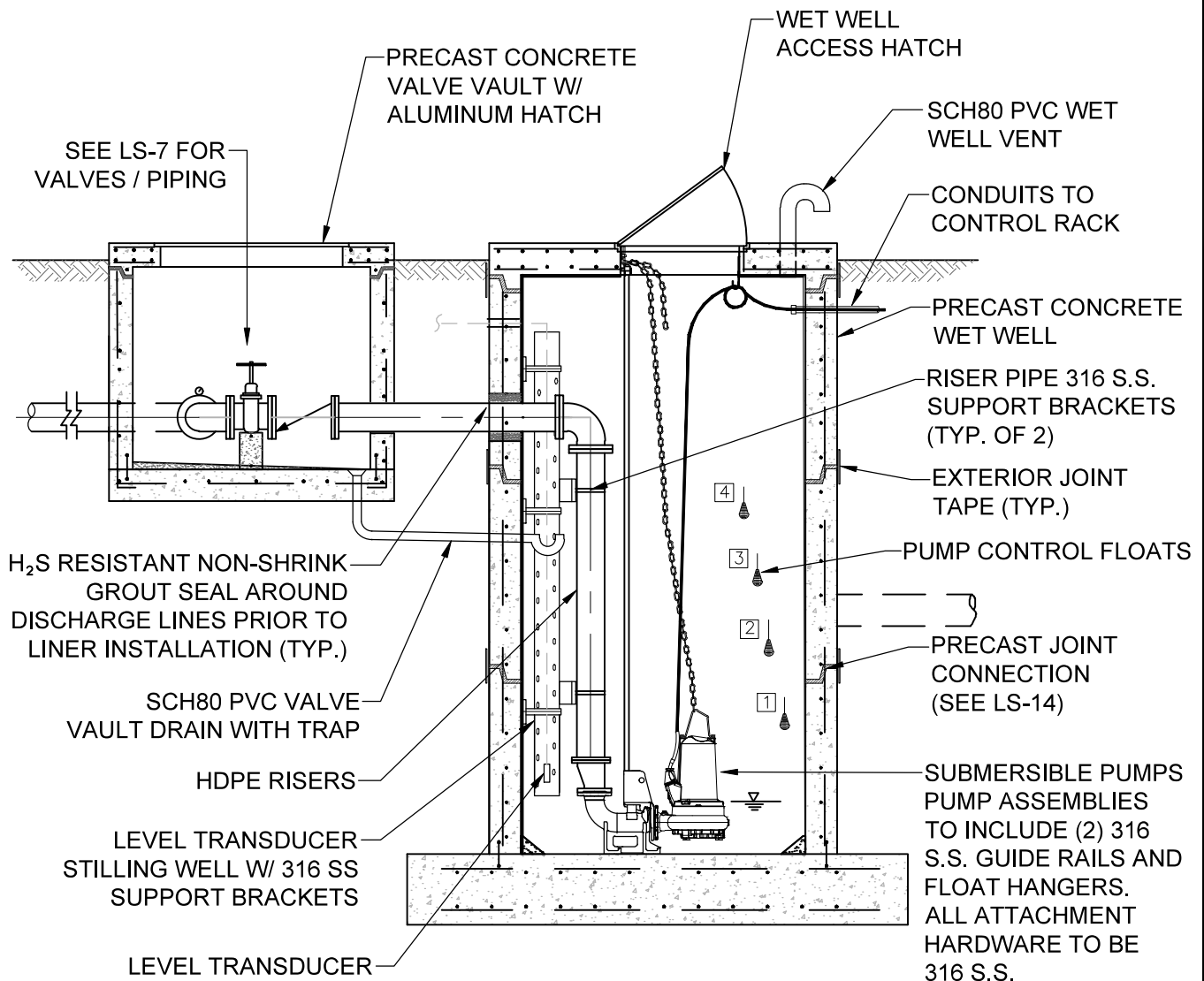


CITY OF HOLLY HILL, FLORIDA
STANDARD CONSTRUCTION DETAILS

LIFT STATION PLAN

DATE
02/2020

DETAIL NUMBER
LS-7



NOTES:

1. VALVE VAULT TO HAVE (2) COATS - 15 MILS TOTAL OF COAL TAR EPOXY INTERIOR COATING. INSTALL SCH80 PVC VAULT DRAIN AS SHOWN. INSTALL DRAIN TRAP INSIDE WET WELL.
2. PROVIDE HASP TYPE LOCKING MECHANISM ON ALL ACCESS HATCHES.
3. PUMPS TO BE FURNISHED WITH HIGH PRESSURE DISCHARGE COUPLING, STAINLESS STEEL GUIDE RAILS SYSTEM, SEAL FAILURE AND THERMAL OVERLOAD INDICATORS.
4. ALL HARDWARE INSIDE WET WELL TO BE 316 STAINLESS STEEL (S.S.).

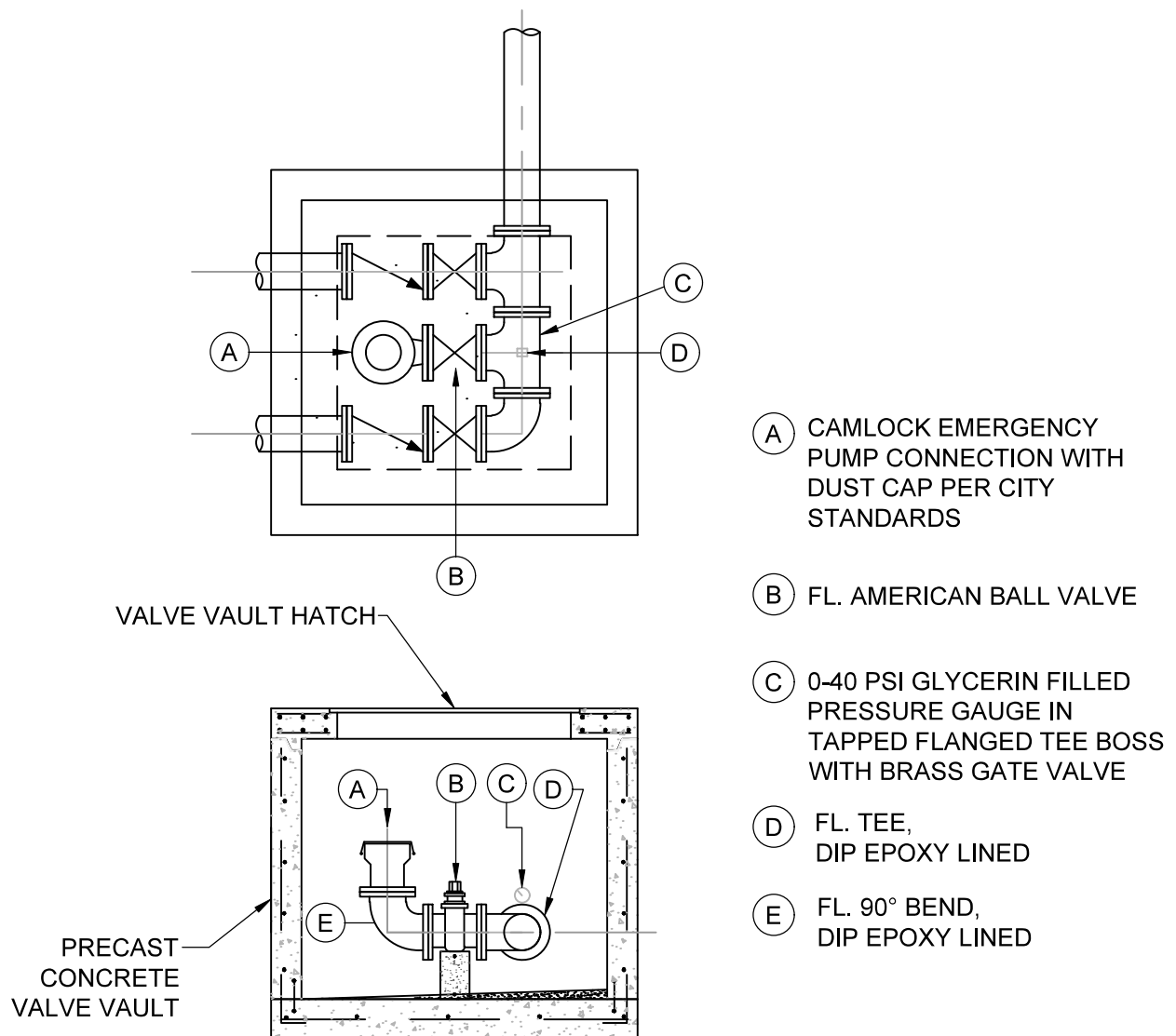


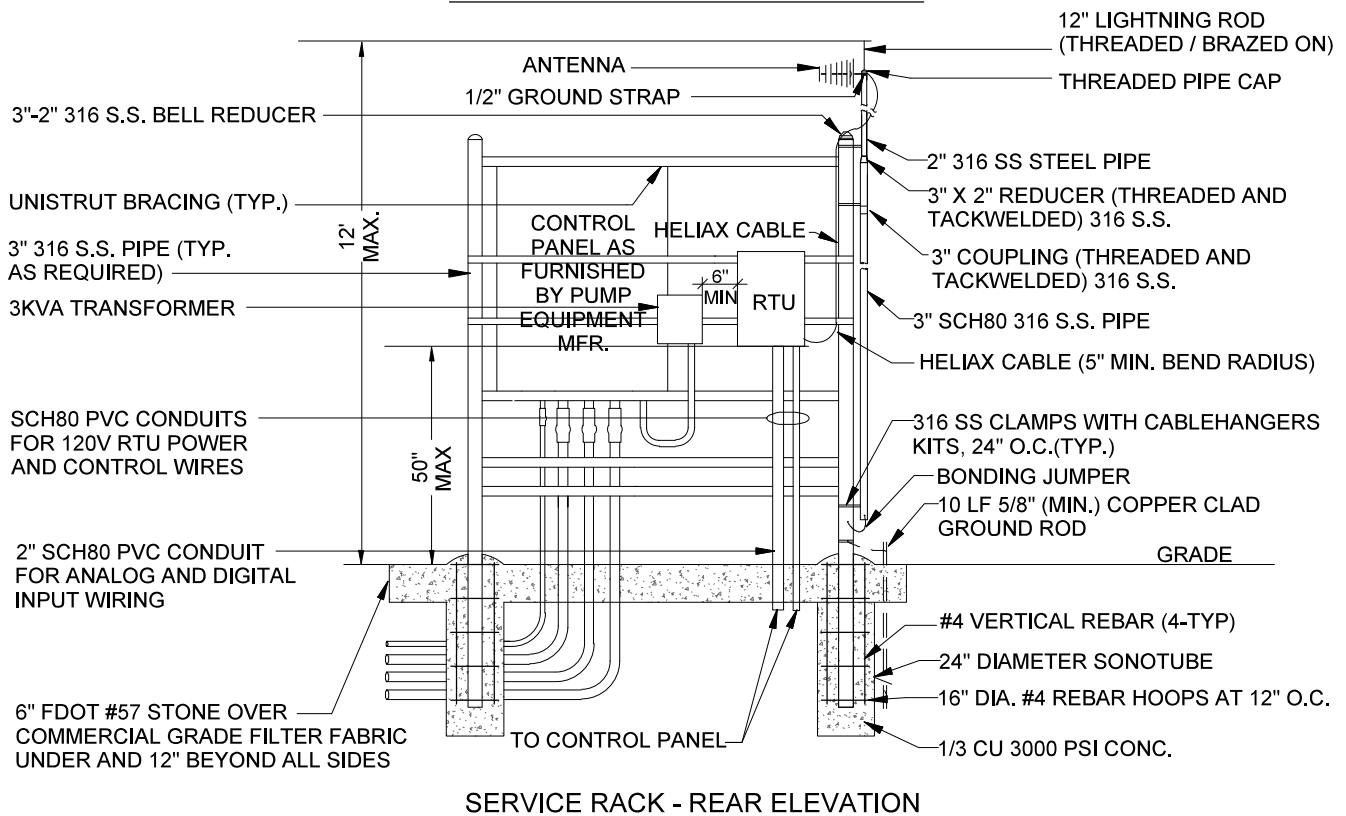
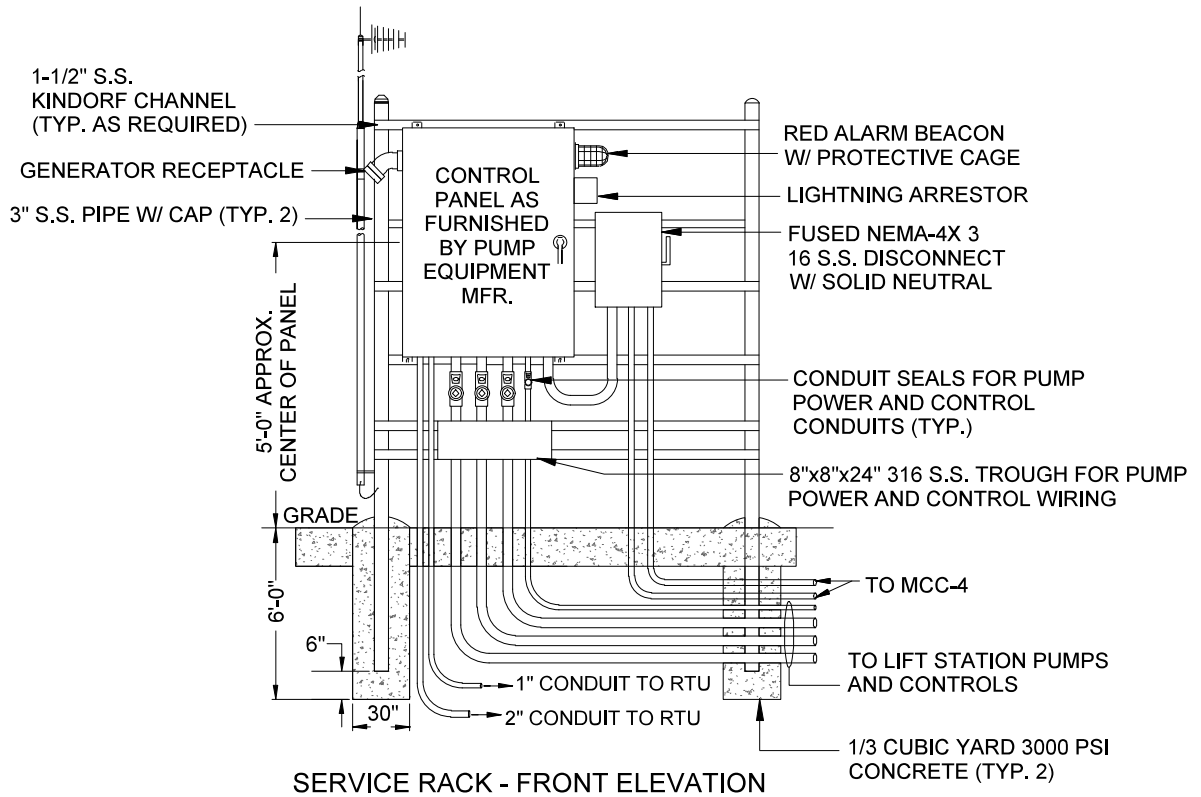
CITY OF HOLLY HILL, FLORIDA
STANDARD CONSTRUCTION DETAILS

LIFT STATION WET WELL

DATE
02/2020

DETAIL NUMBER
LS-8





CITY OF HOLLY HILL, FLORIDA
STANDARD CONSTRUCTION DETAILS

**LIFT STATION
ELECTRICAL EQUIPMENT RACK**

DATE
02/2020

DETAIL NUMBER
LS-10

LIFT STATION ELECTRICAL EQUIPMENT RACK NOTES

MAST INSTALLATION NOTES:

1. PROPOSED MAST HEIGHT WILL BE DETERMINED BY CITY UTILITIES PRIOR TO CONSTRUCTION.
2. CONFORM TO THE LATEST BUILDING AND ZONING CODES FOR NEW INSTALLATIONS.
3. DO NOT CONSTRUCT MAST WITHIN 3 FEET OF AN ELECTRICAL SERVICE DROP (480V OR LESS), WITHIN 10' OF OVERHEAD POWER LINE UP TO 32kV, WITHIN 15' OF AN OVERHEAD POWER LINE UP TO 115kV, OR WITHIN 20' OF AN OVERHEAD POWER LINE EXCEEDING 115kV.
4. GROUND THE MAST AT THE BASE BY PROVIDING 1/2-INCH GROUND STRAP. CONNECT TO GROUND ROD WITH #4 AWG BARE COPPER WIRE AND ACORN CLAMP.
5. COUPLINGS ON THE MAST MUST BE AT LEAST 10' ABOVE GRADE. COUPLINGS ARE NOT ALLOWED BELOW 10' ABOVE GRADE.
6. CONSTRUCT MAST FOUNDATION WITH 3000 PSI REINFORCED CONCRETE IN 24" DIAMETER SONOTUBE IN UNDISTURBED OR COMPACTED SOIL (95% DENSITY).
7. PROVIDE 3" MINIMUM CONCRETE COVER ON REINFORCING STEEL.
8. SHAPE THE TOP OF THE CONCRETE FOUNDATION INTO A DOME.
9. INSTALL 1" AND 2" PVC CONDUITS (1 EACH) TO PUMP CONTROL PANEL. MAINTAIN MINIMUM 6" SEPARATION AND 18" DEPTH.

RTU INSTALLATION NOTES:

1. CONFORM TO THE LATEST CODES FOR NEW INSTALLATIONS.
2. GROUND ANTENNA TO MAST WITH 1/2-INCH GROUND STRAP.
3. ANTENNA HEIGHT AND DIRECTION DETERMINED BY CITY UTILITIES SERVICES PRIOR TO CONSTRUCTION.
4. PROVIDE CORROSION RESISTANCE FROM GALVANIC ACTION AT INTERFACES OF DISSIMILAR METALS EXCEPT AT GROUND POINTS.
5. MAINTAIN MINIMUM 6" SEPARATION. FASTEN HELIX CABLE TO EXTERIOR OF MAST WITH 316 STAINLESS STEEL CLAMPS AT 24" INTERVALS.

GENERAL NOTES:

1. ALL CONDUITS ENTERING ANY ENCLOSURE, PANEL, DISCONNECT, WIREWAY ETC., SHALL BE TERMINATED WITH A THREADED HUB FITTING (MEYERS HUB).
2. IF THE PUMP CABLES ARE OF A SIZE (CROSS SECTIONAL AREA) THAT EXCEEDS NEC CONDUIT FILL REQUIREMENTS, THEN CONDUITS SHALL BE UPSIZED TO MEET NEC REQUIREMENTS.
3. MINIMUM CLEAR WORKING SPACE PER NEC ARTICLE 110.26 SHALL BE MAINTAINED.
4. PUMP MANUFACTURER SUPPLIED CONTROL PANEL MUST MEET STANDARDS SHOWN ON CITY'S STANDARD DETAILS SHEETS E-6 THRU E-9.
5. CONTROL PANEL/SERVICE GROUND ROD(S) AND RTU GROUND ROD SHALL BE A MINIMUM OF 6' APART, CONNECTED WITH #4 AWG CU SOLID BARE CONDUCTORS, AND COPPER/COPPER CLAD.

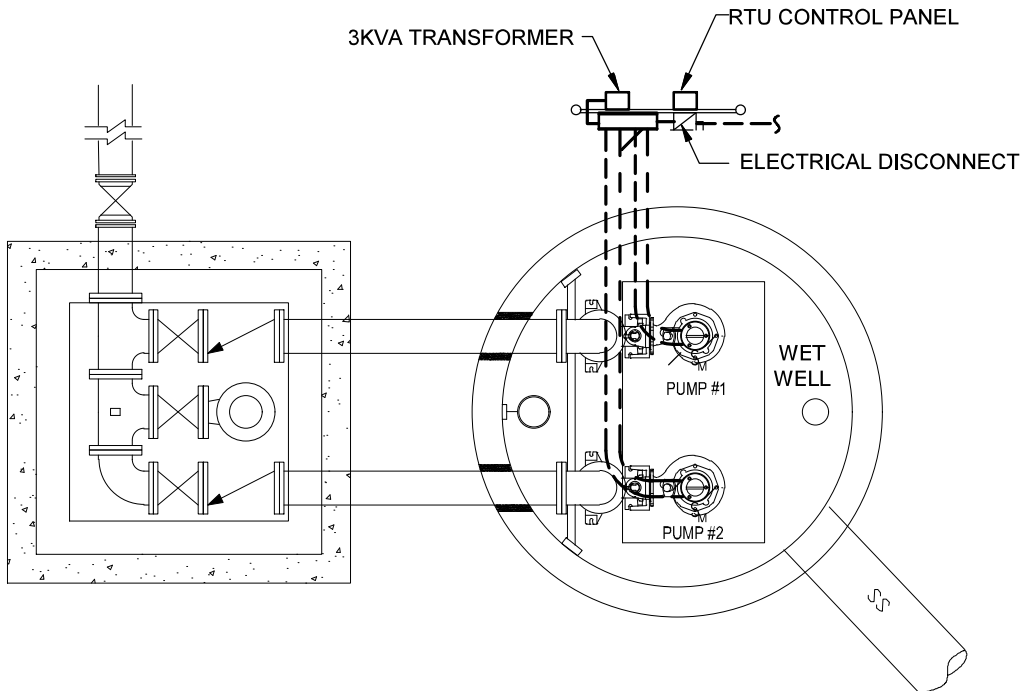
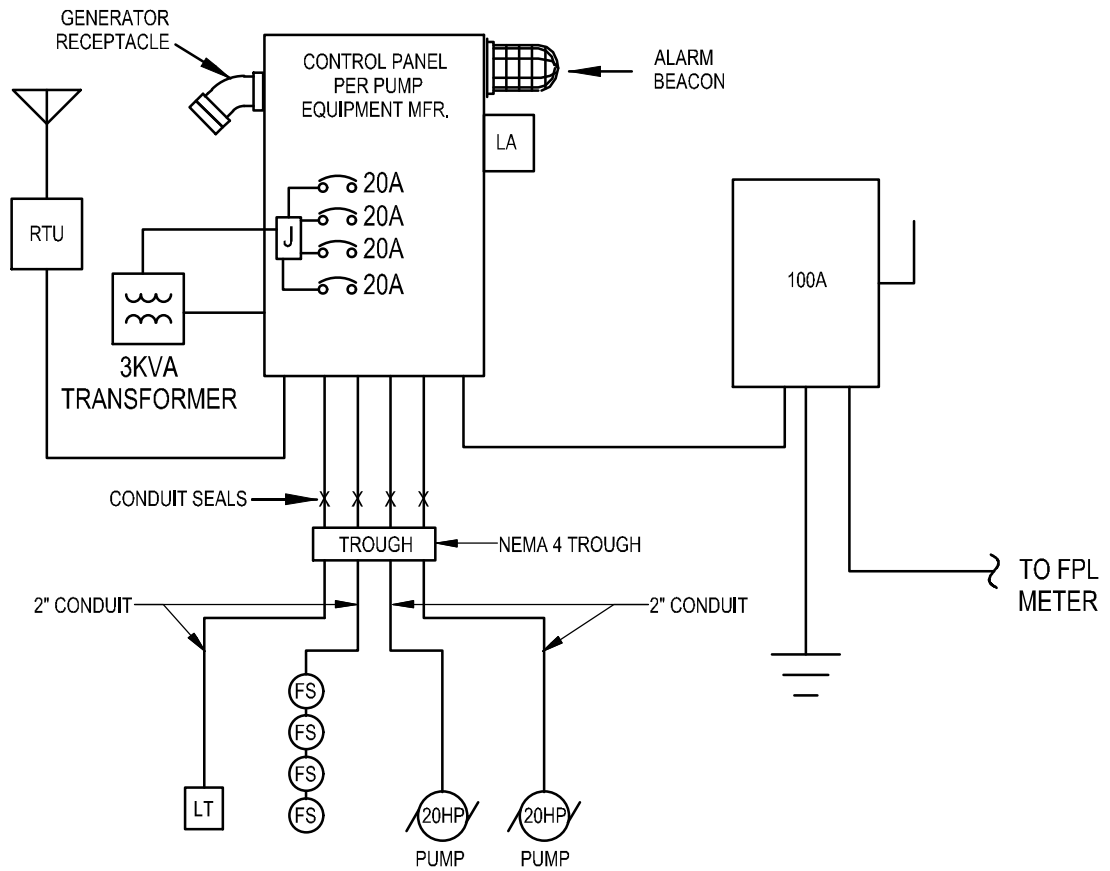


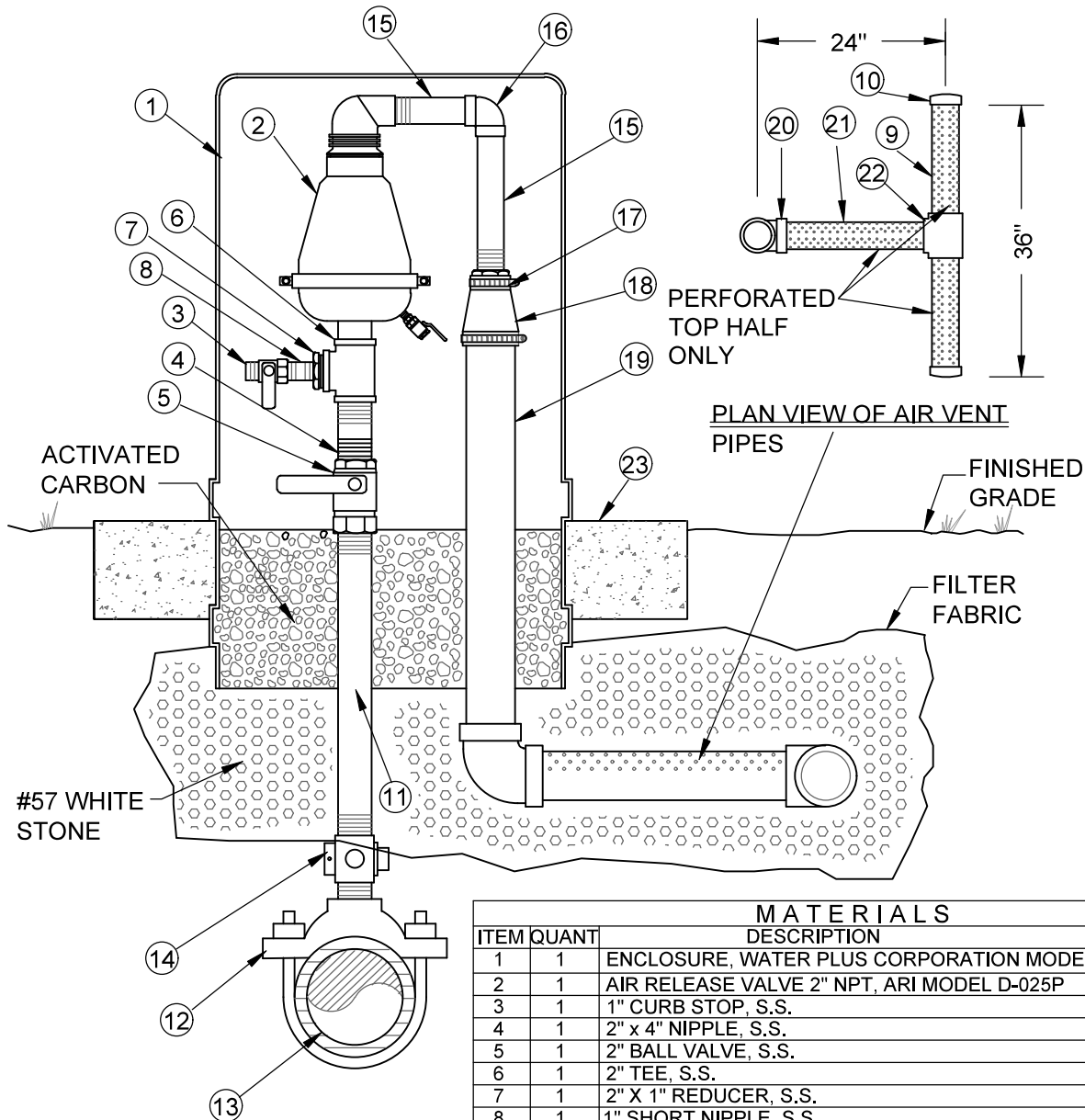
CITY OF HOLLY HILL, FLORIDA
STANDARD CONSTRUCTION DETAILS

LIFT STATION ELECTRICAL EQUIPMENT RACK NOTES

DATE
02/2020

DETAIL NUMBER
LS-11





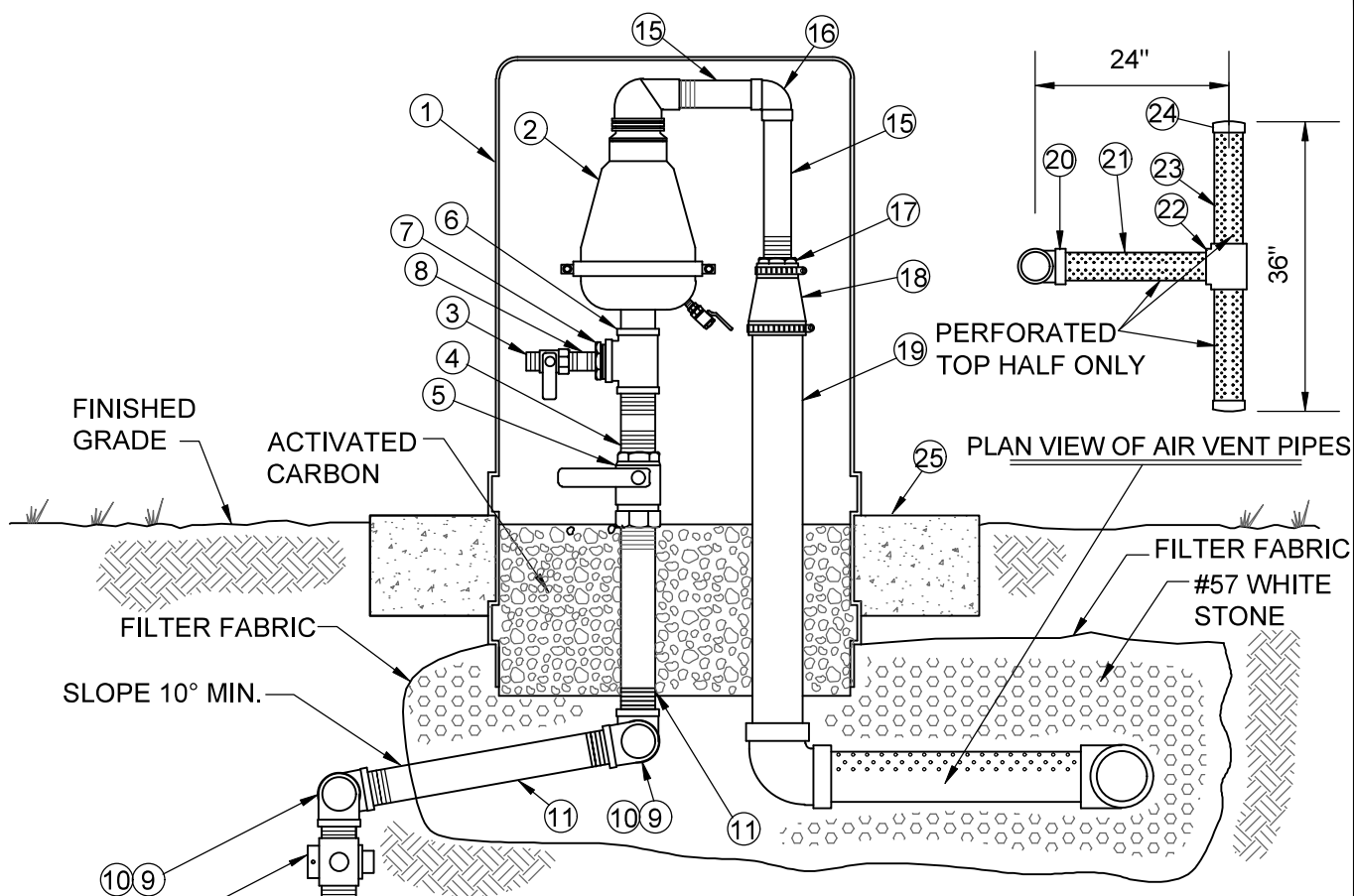
NOTE:
ENCLOSURE SHALL BE
COLOR CODED GREEN

ITEM		QUANT	DESCRIPTION
1	1		ENCLOSURE, WATER PLUS CORPORATION MODEL #131632
2	1		AIR RELEASE VALVE 2" NPT, ARI MODEL D-025P
3	1		1" CURB STOP, S.S.
4	1		2" x 4" NIPPLE, S.S.
5	1		2" BALL VALVE, S.S.
6	1		2" TEE, S.S.
7	1		2" X 1" REDUCER, S.S.
8	1		1" SHORT NIPPLE, S.S.
9	2		3" PIPE, PVC, LENGTH AS SHOWN, PERFORATED TOP HALF ONLY
10	2		3" CAP, PVC
11	1		2" PIPE, S.S. LENGTH AS REQUIRED
12	1		2" DOUBLE STRAP TAPPING SADDLE, D.I.
13	1		4" & LARGER PIPE, D.I. OR PVC (DR-18)
14	1		2" CORPORATION BRASS
15	2		1-1/2" PIPE, PVC, LENGTH AS REQUIRED
16	1		1-1/2" x 90° ELBOW, PVC
17	1		2" X 1-1/2" REDUCER, PVC
18	1		3" X 2" FLEX COUPLING
19	1		3" PIPE, PVC, LENGTH AS REQUIRED
20	1		3" x 90° ELBOW, PVC
21	1		3" PIPE, PVC, LENGTH AS SHOWN, PERFORATED TOP HALF ONLY
22	1		3" TEE, PVC
23	1		CONCRETE SLAB AROUND ENCLOSURE



CITY OF HOLLY HILL, FLORIDA
STANDARD CONSTRUCTION DETAILS
**SANITARY SEWER AIR RELEASE VALVE
ASSEMBLY W/ ODOR CONTROL SYSTEM
(VERTICAL PIPE LAYOUT)**

DATE
02/2020
DETAIL NUMBER
LS-13



MATERIALS

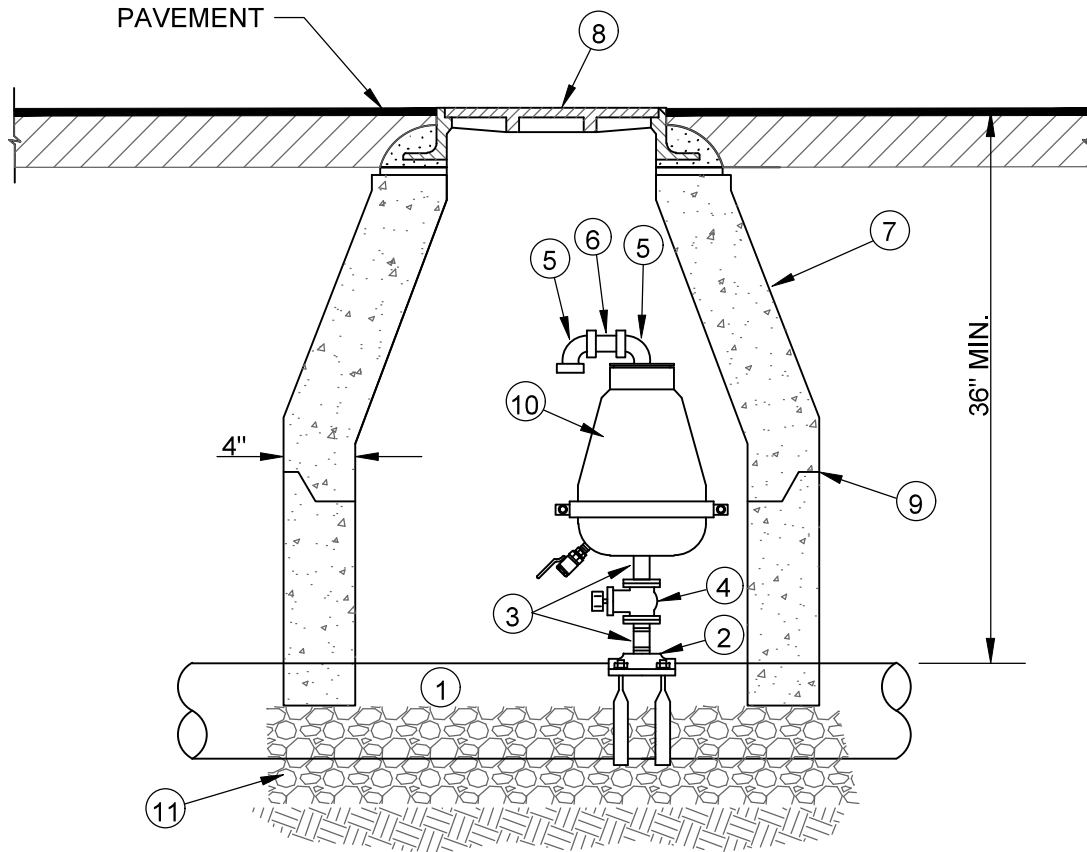
ITEM	QUANT	DESCRIPTION
1	1	ENCLOSURE, WATER PLUS CORPORATION MODEL #131632 - GREEN
2	1	AIR RELEASE VALVE 2" NPT, ARI MODEL S-025 P
3	1	1" CURB STOP, S.S.
4	1	2" x 4" NIPPLE, S.S.
5	1	2" BALL VALVE, S.S.
6	1	2" TEE, S.S.
7	1	2" X 1" REDUCER, S.S.
8	1	1" SHORT NIPPLE, S.S.
9	4	2" x 90° ELBOW, S.S.
10	2	2" SHORT NIPPLE, S.S.
11	2	2" PIPE, S.S. LENGTH AS REQUIRED
12	1	2" DOUBLE STRAP TAPPING SADDLE, S.S.
13	1	4" & LARGER PIPE, D.I. OR PVC (DR-18)
14	1	2" CORPORATION BRASS
15	2	1-1/2" PIPE, PVC, LENGTH AS REQUIRED
16	1	1-1/2" x 90° ELBOW, PVC
17	1	2" X 1-1/2" REDUCER, PVC
18	1	3" X 2" FLEX COUPLING
19	1	3" PIPE, PVC, LENGTH AS REQUIRED
20	1	3" x 90° ELBOW, PVC
21	1	3" PIPE, PVC, LENGTH AS SHOWN, PERFORATED TOP HALF ONLY
22	1	3" TEE, PVC
23	2	3" PIPE, PVC, LENGTH AS SHOWN, PERFORATED TOP HALF ONLY
24	2	3" CAP, PVC
25	1	CONCRETE SLAB AROUND ENCLOSURE



CITY OF HOLLY HILL, FLORIDA
STANDARD CONSTRUCTION DETAILS
**SANITARY SEWER AIR RELEASE VALVE
ASSEMBLY W/ ODOR CONTROL SYSTEM
(OFFSET PIPE LAYOUT)**

DATE
02/2020

DETAIL NUMBER
LS-14



MATERIALS		
ITEM	QUANT	DESCRIPTION
1	*	4" & LARGER PIPE, D.I. OR PVC (DR-18)
2	1	2" (TAP) SADDLE, SERVICE (SEE NOTE)
3	2	2" x 2" NIPPLE, S.S.
4	1	2" BALL VALVE, S.S.
5	2	1/2" x 90° ELBOW, PVC
6	1	1/2" x 6" NIPPLE, PVC
7	1	PRECAST MANHOLE CONE, DOG HOUSE STYLE
8	1	24" DIA. CAST IRON/DUCTILE IRON MANHOLE
		RING & COVER - 24" MARKED SEWER ARV
9	*	SEALER (RAM-NEK)
10	1	AIR RELEASE VALVE (ARI MODEL D-025P)
11	*	GRAVEL BED

NOTES:

1. 4" SADDLE TO BE BRASS FULL SUPPORT TYPE.
2. 6" AND LARGER SADDLES TO BE DOUBLE STRAP DUCTILE IRON.
3. MANHOLE STRUCTURE TO INCLUDE NECESSARY FOOTING TO ACCOMMODATE TRAFFIC CONDITIONS.
4. MANHOLE STRUCTURE INTERIOR TO BE COAL TAR EPOXY LINED.
5. THE VALVE SHALL BE OFFSET IN MANHOLE FOR MAINTENANCE PURPOSES.



CITY OF HOLLY HILL, FLORIDA
STANDARD CONSTRUCTION DETAILS
SANITARY SEWER - FORCE MAIN
AIR RELEASE VALVE
(UNDERGROUND - TRAFFIC STYLE)

DATE
02/2020

DETAIL NUMBER
LS-15

6" CAMLOCK QUICK DISCONNECT
COUPLING WITH DUST CAP PER
CITY STANDARDS

90° BEND

RESILIENT WEDGE
GATE VALVE

36"

24"

FINISHED
GRADE

4" THICK, 18"x18"
CONCRETE COLLAR

EPOXY LINED DIP

DIP PUMP OUT
CONNECTION

FORCE MAIN

90° BEND

DIP TEE

3/4" BASE ROCK

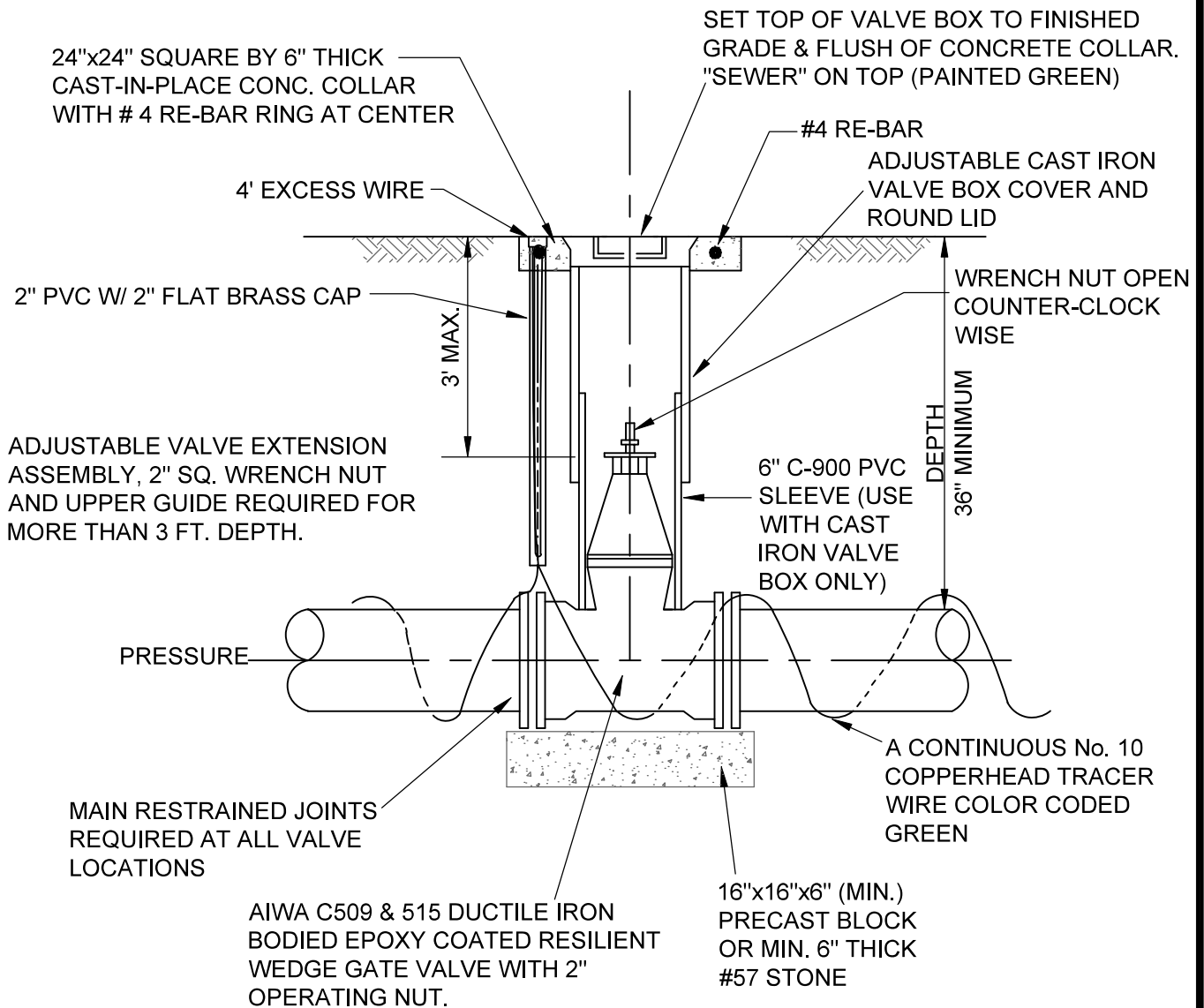


CITY OF HOLLY HILL, FLORIDA
STANDARD CONSTRUCTION DETAILS

LIFT STATION
PUMP OUT / BYPASS CONNECTION

DATE
02/2020

DETAIL NUMBER
LS-16



NOTES:

1. BOLT VALVES TO TEE OR CROSS WHEREVER AND WHENEVER APPLICABLE.
2. A CONTINUOUS TRACER WIRE TO BE COLOR CODED "GREEN" FOR SEWER, LAID ON TOP IN TRENCH .
3. GATE VALVE WEDGE SHALL BE COMPLETELY ENCAPSULATED WITH EDAM RUBBER.
4. ALL OUTSIDE HEX NUTS, BOLTS AND HARDWARE (EXCEPT MECHANICAL BOLTS SUCH AS "T" BOLTS) SHALL BE MINIMUM 316 STAINLESS STEEL GRADE.



CITY OF HOLLY HILL, FLORIDA
STANDARD CONSTRUCTION DETAILS
**SANITARY SEWER FORCE MAIN -
VALVE & VALVE BOX (4" - 16")**

DATE
02/2020

DETAIL NUMBER
LS-17